



## 污水处理固液分离设备

YOSUN ENVIRONMENTAL

无锡源申环保设备有限公司

Wuxi Yosun Environmental Protection Equipment Co.,Ltd.

科技改变环境 技术创造价值

产品手册

PRODUCT CATALOG



源申环保

YOSUN ENVIRONMENTAL



**源申环保**  
YOSUN ENVIRONMENTAL

Professional supplier of solid liquid separator for waste water treatment

## 溶气气浮 Dissolved Air Flotation



Professional design



Exquisite craftsmanship



Focus on separating

### 产品简介

溶气气浮设备是一款通过设备产生的微气泡和污水中的悬浮物接触后,使悬浮物的密度低于水的密度,从而使悬浮物迅速上浮至污水的表面,达到去除水中悬浮物(包含油脂类等不溶于水的细小颗粒)的固液分离设备。可应用在预处理降低后端工艺负荷、除油、中水回用、景观水循环、深度处理、尾水除磷等工艺段,是去除悬浮物、降低BOD\COD总磷等指标的关键核心设备。



### Dissolved Air Flotation

Dissolved air flotation is a solid liquid separator that many bubbles in DAF contact with the solids making their density lower than the water and then they will float up to the surface so that suspended solids of water including oil&grease can be reduced. And It can be used in many fields which is the critical equipment to reduce the ss,cod,bod and total phosphorus etc.





**源申环保**  
YOSUN ENVIRONMENTAL

Professional supplier of solid liquid separator for waste water treatment



Professional design



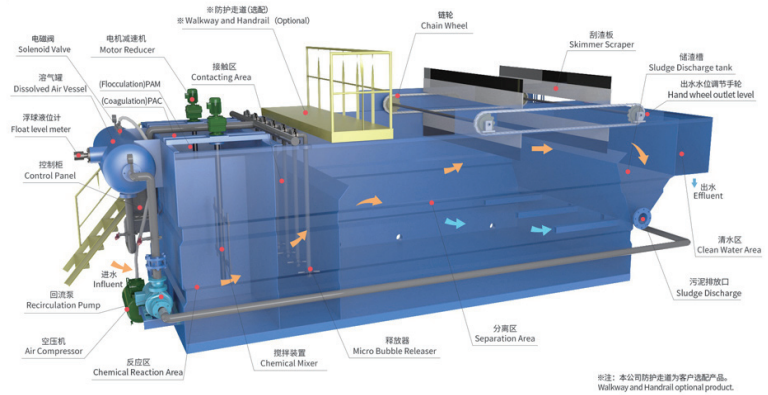
Exquisite craftsmanship



Focus on separating

## 构造以及工作过程

溶气气浮设备通过循环泵取处理后的出水作为循环水，进入溶气罐，同时在溶气罐内加入压缩空气，在溶气罐内进行高效的气水混合，混合后饱含空气的溶气水被送入气浮接触区，再通过释放器的瞬时释压，产生大量的纳米级微气泡，微气泡迅速附着至混凝好的悬浮物上，悬浮物的密度逐渐小于水的密度，自动上浮至表面，设备底部留下干净的水，在底部通过出水装置排放至清水区，清水区的一部分水继续作为设备的循环水使用，其余排放至下一道工序。上浮至表面的浮渣通过刮渣机刮至浮渣池进一步处理。

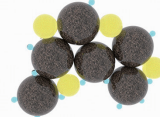


## Working Process

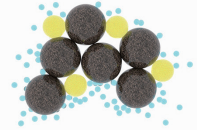
Dissolved air flotation equipment takes the treated effluent through the circulating pump as circulating water, and enters the dissolved air tank. The air-saturated dissolved air water is sent into the air flotation contact area, and then through the instantaneous pressure release of the releaser, a large number of nano-scale micro-bubbles are generated, and the micro-bubbles quickly attach to the coagulated suspended matter, and the density of the suspended matter is gradually less. The density of water automatically rises to the surface, leaving clean water at the bottom of the equipment, which is discharged to the clean water area through the water outlet at the bottom. The scum that floats to the surface is scraped to the scum pool by a slag scraper for further treatment.



1.裹携到絮凝体中或絮凝体表面的气泡。

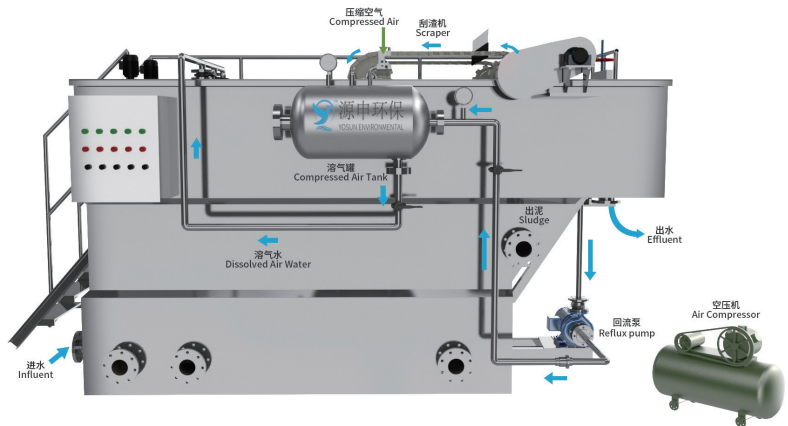


2.气体在颗粒表面析出，浮升气泡与颗粒碰撞。



3.气泡顶托。

● 絮凝物  
● 悬浮物  
● 微气泡





**源申环保**  
YOSUN ENVIRONMENTAL

Professional supplier of solid liquid separator for waste water treatment

## 溶气气浮 Dissolved Air Flotation



Professional design



Exquisite craftsmanship



Focus on separating

### 产品优势

- ① 微气泡粒径10-30 $\mu$ m, 水中停留时间更久。
- ② 表面负荷高达10-30 $m^3/(m^2 \cdot h)$ , 占地更小。
- ③ 气水混合效率高达95%以上。
- ④ 成套设备供货, 现场安装简便。
- ⑤ 集成度高, 操作运行高效简洁。
- ⑥ 智能进气, 设备更节能。
- ⑦ 顶入式释放器, 实现检修不停机。
- ⑧ 可调式液位系统和刮渣系统, 可控浮渣含水率。
- ⑨ 更专业的配套设计及建议。



### Product Advantages

- ① The particle size of microbubbles is 10-30 $\mu$ m, and the residence time in water is longer.
- ② Surface load up to 10-30 $m^3/(m^2 \cdot h)$  compact style to save the space.
- ③ Gas-water mixing efficiency is higher than 95%.
- ④ Complete system and easy to install.
- ⑤ High integration, efficient and simple operation.
- ⑥ Intelligent air suction, more energy saving equipment.
- ⑦ Top - in release, realizing non-stop maintenance.
- ⑧ Adjustable liquid level system and slag scraping system can control the moisture content of scum.
- ⑨ Professional supporting design and suggestions.





**源申环保**  
YOSUN ENVIRONMENTAL

Professional supplier of solid liquid separator for waste water treatment



Professional design



Exquisite craftsmanship



Focus on separating

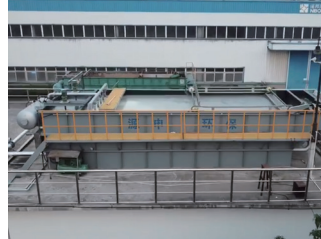
## 应用领域

- ① 石油化工、屠宰、食品 (除油、降SS、降COD)。
- ② 印染、纺织、制革 (降SS、脱色、降COD)。
- ③ 造纸、制药 (降SS、降COD)。
- ④ 尾水提标 (除磷、降SS)。
- ⑤ 中水回用 (降SS、除油)。
- ⑥ 河道、景观水 (降SS、降浊度)。
- ⑦ 新能源、贵金属回收 (降SS、除氟)。
- ⑧ 垃圾渗滤液 (减轻后端生化负荷)。
- ⑨ 表面处理 (除重金属、降SS)。



## Application Fields

- ① Petrochemical, slaughtering, food.  
(Oil removal, SS reduction, COD reduction)
- ② Printing and dyeing, textile, tanning.  
(Reduce SS, decolorization and COD)
- ③ Paper making, pharmaceutical.  
(Reduce SS and COD)
- ④ Final discharged water further improvement.  
(Phosphorus removal, SS reduction)
- ⑤ Reuse of reclaimed water.  
(Reduce SS and remove oil)
- ⑥ River, landscape water.  
(Reduce SS and turbidity)
- ⑦ New energy, precious metal recovery.  
(Reduce SS and remove fluorine)
- ⑧ Landfill leachate.  
(Reduce back-end biochemical load)
- ⑨ Surface treatment.  
(Heavy metals, SS reduction)



# 溶气气浮技术参数表 >

RDAF Model Selection Table:

型号 Model	处理量 Capacity (m³/h)	进水量 Inlet	管口连接 Piping Connections			尺寸 Dimensionns (mm)					
			出水口 Effluent	排渣口 Sludge	放空口 Vent	L	L1	L2	W	W1	H
RDAF-002	2	DN50	DN50	DN100	DN50	3180	2200	400	700	700	1600
RDAF-003	3	DN50	DN50	DN100	DN50	4300	3300	500	800	700	1900
RDAF-005	5	DN80	DN80	DN100	DN50	4500	3500	500	1000	700	1960
RDAF-010	10	DN100	DN100	DN100	DN80	5600	4500	500	1200	700	1960
RDAF-015	15	DN125	DN100	DN150	DN80	6100	5000	500	1500	700	1960
RDAF-020	20	DN150	DN150	DN150	DN80	6100	5000	600	1800	700	1960
RDAF-030	30	DN150	DN150	DN150	DN80	7100	6000	700	2000	700	2050
RDAF-040	40	DN200	DN150	DN150	DN80	8100	7000	900	2200	700	2050
RADF-050	50	DN200	DN150	DN150	DN80	8100	7000	1000	2700	700	2050
RDAF-060	60	DN250	DN200	DN150	DN80	9100	8000	1000	2800	700	2050
RDAF-070	70	DN250	DN200	DN150	DN80	10100	9000	1000	3000	700	2050
RDAF-080	80	DN250	DN250	DN150	DN100	11100	10000	1200	3200	700	2050
RDAF-090	90	DN250	DN250	DN150	DN100	11600	10500	1200	3200	700	2050
RDAF-100	100	DN300	DN250	DN150	DN100	11600	10500	1200	3600	700	2050

型号 Model	处理量 Capacity (m³/h)	设备重量 Weight (Kg)	工作重量 Operating Weight (kg)	回流泵 Reflux pump (KW)	空压机 Air compressor (KW)	功率 Power	刮渣机 Skimmer (KW)	反应电机 Chemical reaction tank (KW)	
RDAF-002	2	1300	4000	0.55	0.55		0.12	0.25	0.12
RDAF-003	3	1500	5000	0.75	0.55		0.12	0.25	0.12
RDAF-005	5	1600	7000	1.1	0.55		0.12	0.25	0.12
RDAF-010	10	2000	12000	1.5	0.75		0.12	0.25	0.12
RDAF-015	15	2200	18000	2.2	0.75		0.12	0.37	0.25
RDAF-020	20	3000	22000	2.2	0.75		0.12	0.37	0.25
RDAF-030	30	3800	32000	3	1.5		0.12	0.37	0.25
RDAF-040	40	5000	45000	5.5	1.5		0.12	0.37	0.25
RADF-050	50	5500	55000	7.5	1.5		0.12	0.75	0.55
RDAF-060	60	6000	66000	7.5	1.5		0.12	0.75	0.55
RDAF-070	70	6800	85000	11	1.5		0.12	0.75	0.55
RDAF-080	80	7500	100000	11	1.5		0.12	0.75	0.55
RDAF-090	90	8300	105000	11	1.5		0.12	0.75	0.55
RDAF-100	100	9000	110000	15	2.2		0.12	0.75	0.55

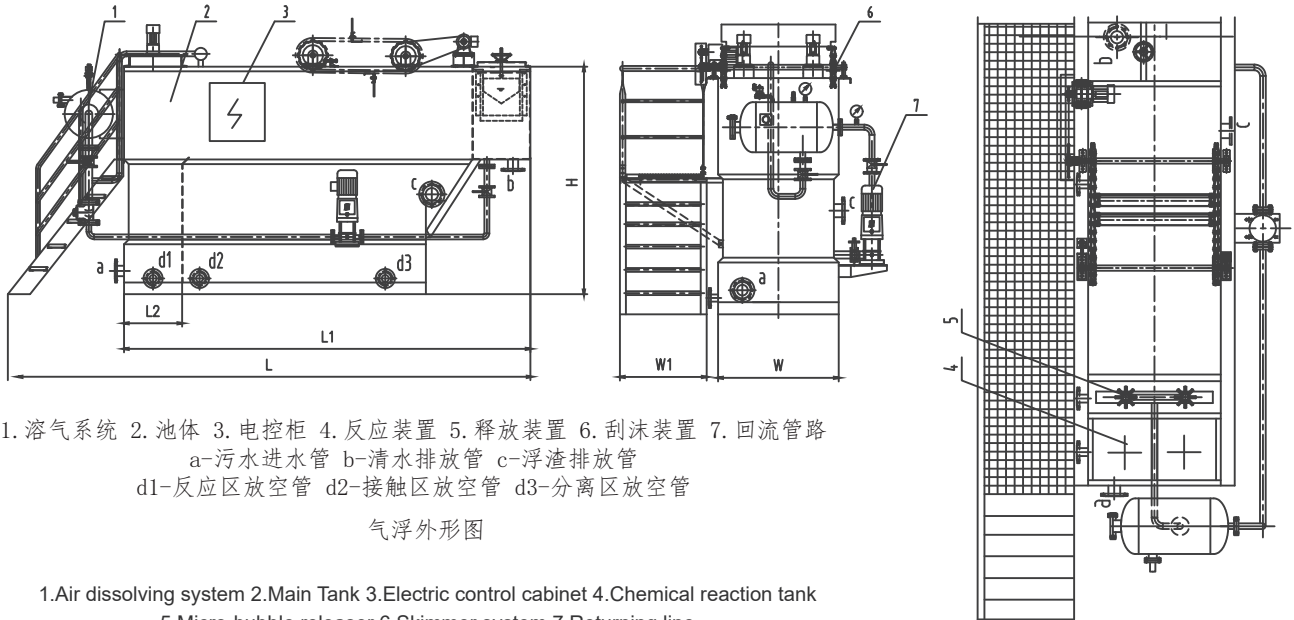
## 参数表说明 > Selection Table Note

样本参数及图片仅供参考，源申公司保留持续改进的权利，所有参数以双方确认为准。如有任何技术问题，请与我们联系。

The Parameters and Pictures are only for reference. Yosun reserves all rights. All parameters are subject to the confirmation of both parties. More technical questions, please feel free to contact us.

# 溶气气浮外形图 >

RDAF Outline Dimension



1. 溶气系统 2. 池体 3. 电控柜 4. 反应装置 5. 释放装置 6. 刮沫装置 7. 回流管路  
 a-污水进水管 b-清水排放管 c-浮渣排放管  
 d1-反应区放空管 d2-接触区放空管 d3-分离区放空管

气浮外形图

- 1.Air dissolving system 2.Main Tank 3.Electric control cabinet 4.Chemical reaction tank  
 5.Micro-bubble releaser 6.Skimmer system 7.Returning line  
 a-Raw water inlet pipe b-Clean water outlet pipe c-Foam discharge pipe  
 d1-Reaction area vent pipe d2-Vent tube in contact area d3-Separate area vent pipe

dissolved air flotation outline drawing

# 溶气气浮耗材表 >

DAF Accessories list:

配件名称 Parts Name	配件图片 Accessories Pictures	备注 Remarks
链条 Chain		按照客户要求可自行选配 Optional according to customer requirements
释放器 Releaser		按照客户要求可自行选配 Optional according to customer requirements
橡胶刮板 Rubber Scraper		按照客户要求可自行选配 Optional according to customer requirements
压力表 Pressure Gauge		按照客户要求可自行选配 Optional according to customer requirements
浮球液位开关 Float level switch		按照客户要求可自行选配 Optional according to customer requirements

 专注分离 服务环境

## 无锡源申环保设备有限公司

Wuxi Yosun Environmental Protection Equipment Co.,Ltd.

电话TEL:+86-0510-85264060

传真FAX:+86-0510-83157565

邮箱Email:service@wxyosun.com

网址Web:www.wxyosun.com|www.wxyshb.com